

# High Speed Single-Jersey Machine with Perfect Elastane Plating and 3-Thread Fleece

S296-1

S296-2

SBF296-1

SBF296-2

S2112-2



experience makes the difference



**Terrot**



# S296-1 | S296-2 | SBF296-1 | SBF296-2 | S2112-2

A wide range of different yarns in combination with up to 4 needle tracks enables a large variety in fabric structures

Completely re-engineered knitting head with convertible low cost cylinder needles (S296-2)

## Frame

- Standard C-frame for 500 mm fabric rolls
- Gauge conversion „Quick Change“
- Central and individual stitch length adjustment
- Oil bath for cylinder bearing
- Hand levers
- Uniwave spray oiler
- Industrial C-frame for 800 and 1050 mm fabric rolls
- Pulsonic 5.2 oiler

## Needles

- 2 needle tracks: low cost needle type version (S296-2)
- Up to 4 types of cylinder needles
- Short needle types (1 track)

## Cam parts

- Exchange cam for 3 positions in KNIT-TUCK-MISS
- High system density single jersey machine with 3.7 feeds per inch diameter (S2112-2)
- High speed version: cams in single track/short needle types (1 track)
- Conversion kit for 3-thread fleece fabric (SBF296-1 | SBF296-2)

## Fabric take-down

- Motorized fabric take-down with 3-roller system (S296-1 | S296-2 | S2112-2)
- Segmented take down shaft
- Cadratex fabric spreader
- mechanically driven fabric take-down device (S296-1 | S296-2 | S2112-2)
- Fabric folding device
- Fabric basket
- Rotating cutting device
- Rising roll batcher (S296-1 | S296-2 | S2112-2)

## Yarn feeding

- 2 rings, 4 step drives
- MPF
- Ceramic yarn carriers
- Standard tube creel
- Venticleaner
- Elastomeric plating equipment with MER
- Various creel versions

## Electric

- Frequency controlled drive (AC) 4 KW
- Control voltage 24 V

## Control

- Terrot Control
- 5-shift counter
- Digital revolution counter
- Fabric roll size counter
- BDE interface

## Additional

- Needle bed lighting
- Electronic needle detectors

● Standard ○ Options

Type	S296-1									
Diameter in inch	26"	28"	30"	32"	34"	36"	38"	40"	42"	
No. of feeders	84	90	96	102	109	115	122	128	134	
Gauges E	12 – 54									

Type	S296-2									
Diameter in inch	26"	28"	30"	32"	34"	36"	38"	40"	42"	
No. of feeders	84	90	96	102	109	115	122	128	134	
Gauges E	12 – 50									

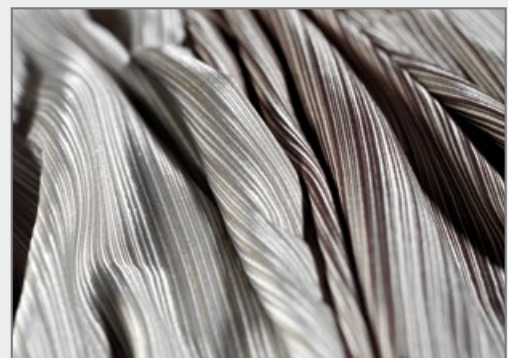
Type	SBF296-1/SBF296-2						S2112-2	
Diameter in inch	26"	28"	30"	32"	34"	36"	26"	30"
No. of feeders	84	90	96	102	109	115	96	112
Gauges E	16 – 24						18 – 54	



S296-2 – knitting head



S296-2 – 2 needle tracks



S296-1 – fabric sample

Frontpage: machine model S296-2

Subject to technical changes. Illustrations may show accessories that are not included in the standard version.