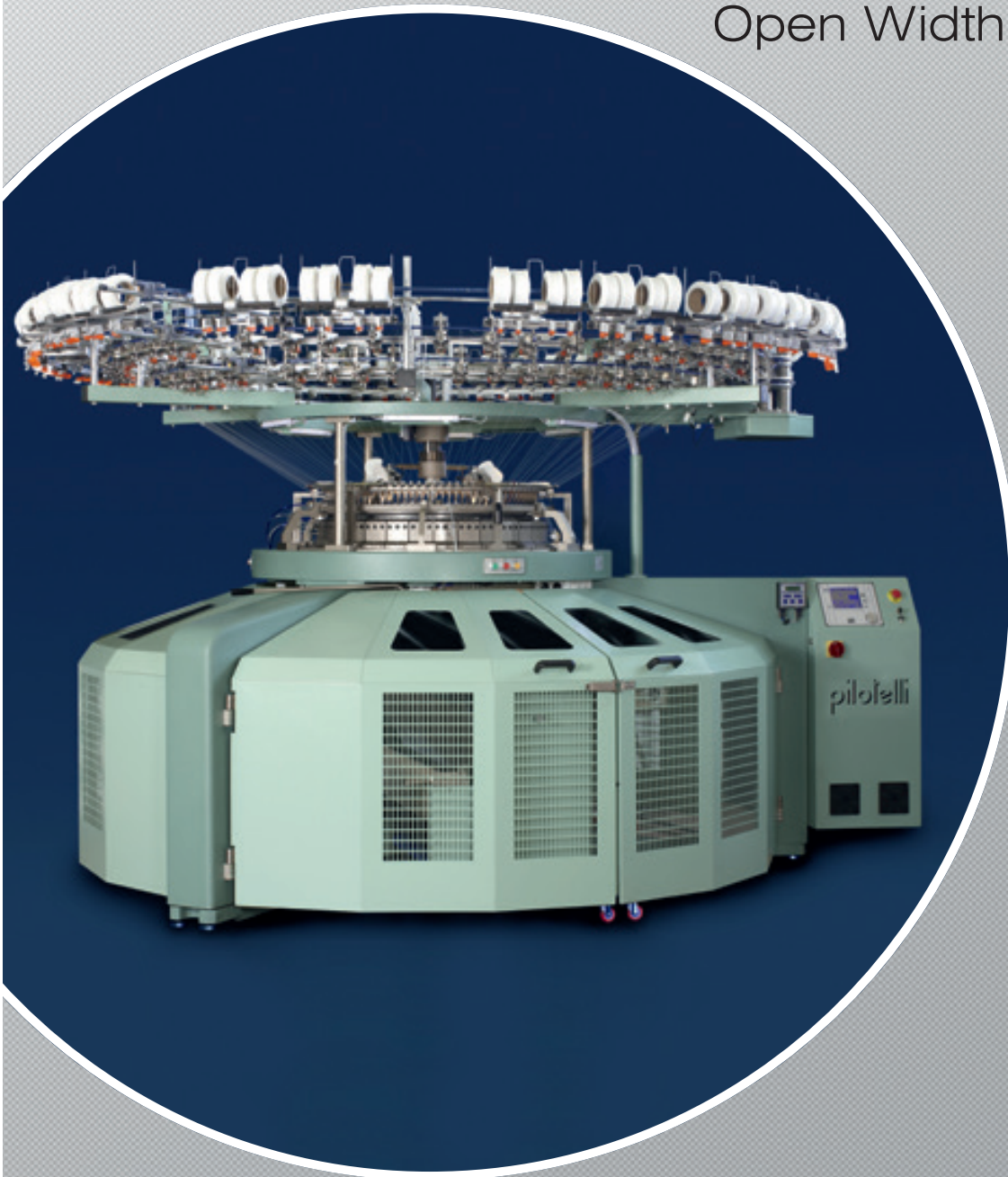


JVCE-4 3.0 T.A.7
J 3.0-4 T.A.7
Single-Jersey Machine
Open Width Frame



experience makes the difference

JVCE-4 3.0 T.A.7 / J 3.0-4 T.A.7

Single-Jersey Circular Knitting Machine with Open Width Frame

Equipment

- 4 needle tracks, 3 equipped with needles and cams
- Optional 4th track cams
- Optional exchange cams for needle positions in KNIT-TUCK-MISS
- Memminger Iro Navigator Digital Terminal
- Tube creel preparation (without creel elements)
- Groz Beckert needles
- Kern Liebers sinkers
- Elastane on each feeder with Memminger Iro MER3 (without cover)
- 3 holes zirconium yarn carrier
- Central stitch length adjustment
- Click clack system for yarn carriers positioning
- ILE fabric scanner
- Memminger IRO MPF positive feeding units
- Drive tower positioned outside of yarn path for easy handling
- Needle bed lighting
- Venticleaner on top and inside cylinder with 2 fan units
- Electronic needle detectors
- Optional:
 - 1-feeder (J 3.0-4) cylinder cam boxes or
 - 3-feeder (JVCE-4) cylinder cam boxes

Frame

- Fabric width 1400 mm from 26" to 34", 1800 mm from 36" to 42"
- Fabric roll diameter up to Ø 480 mm
- 2 hand levers
- Oil bath for cylinder bearing
- Cadratex fabric spreader

Lubrication

- Pulsonic 5.2 oiler (air consumption 180 l/min)
- Optional Uniwave pneumatic oiler

Electrical Specification

- 380 V/50 cycles
- Memminger Iro Delta inverter
- Frequency controlled drive (AC) 5,5 kW

Type	JVCE-4 3.0 T.A.7 / J 3.0-4 T.A.7						
Diameter in inch	26"	28"	30"	32"	34"	36"	38"
No. of feeders	78	84	90	96	102	108	114
Gauges E	14 – 40						



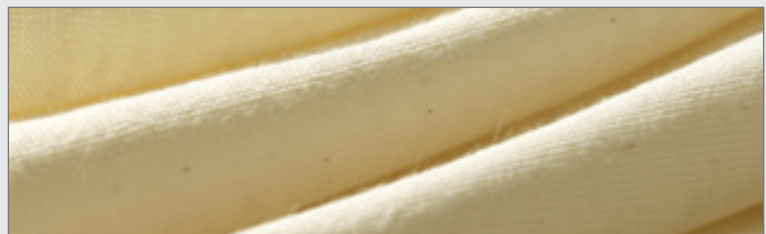
knitting head (3-feeder cam boxes)



plating yarn carriers



click clack system on yarn carrier ring



fabric sample